

MEAB

AKUFVE-110 - AN INSTRUMENT FOR RAPID AND ACCURATE MEASUREMENT OF PARTITION FACTORS IN SOLVENT EXTRACTION



AKUFVE-110 is characterised as an idealised, one-stage mixer-(centrifugal)settler unit. It was developed about 40 years ago (some hundred units are on the market) to improve accuracy and rapidity in the measuring technique of solvent extraction distribution data.

MEAB Metallextraktion AB, Datavägen 51, SE-43632 ASKIM,

☎ +46 31 685414.

Fax +46 31 685474.

www.meab-mx.se

MEAB ChemieTechnik GmbH, Dennewartstrasse 25, D-52068 AACHEN,

☎ +49 241 9631180.

Fax +49 241 9631185.

www.meab-mx.com

Sweden

contact@meab-mx.se

Germany

contact@meab-mx.com

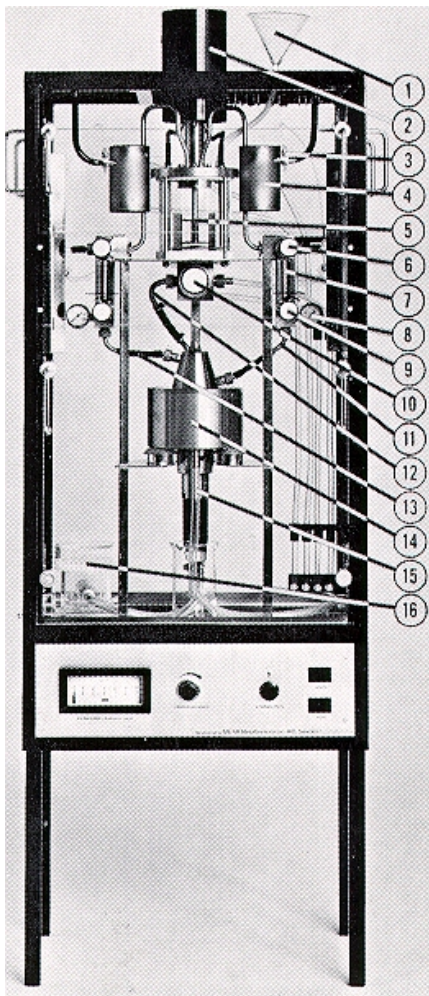
The AKUFVE-110 instrument

The AKUFVE-110 instrument for measuring partition factors and process dynamics in solvent extraction (hydrometallurgy) consists of:

- A dynamic-mixer (1000 cc) with variable speed stirrer
- The H-centrifuge (H-33, about 120 cc) with pneumatic motor drive
- A flow system with regulating, directing and sampling valves, flow meters, heat exchangers and pressure gauges
- The flow system can be connected to detectors of different kind, burettes and thermostat.

The equipment is mounted in a Perspex housing on top of a control box, which carries the pneumatic and electric controls for the operation of the instrument

- The dimensions of AKUFVE 110 are, height 1600 mm, width 600 mm, and depth 350 mm.
- The weight is 90 kg.
- The pneumatic motor of the H-33 centrifuge is driven by compressed air, ca 0.6 m³/min and 6 kp/CM² (85 psig).
- The AKUFVE-110 is designed for 220/110 V, 50/60 Hz, 500 W.



1. Main feed inlet
2. Stirrer motor
3. Sampling valve
4. Heat exchanger
5. Mixer
6. Valve 'DETECTOR or MIXER'
7. Flow meter
8. Pressure gauge
9. Throttling valve
10. Valve 'CENTRIFUGE-CLOSED-DRAIN'
11. Centrifuge outlet, light phase
12. Centrifuge inlet
13. Centrifuge outlet, heavy phase
14. H-33 Centrifuge
15. Centrifuge motor
16. Silencer